

1. Identify the left and right side scoops and extensions.



2. Starting from the left side. Insert the LHS scoop as shown into the middle of the opening. Push it back up to the strut brace.



3. Now line up the clamps at the back of the scoop with the brace and push it onto the brace. The clamps will snap onto the brace.



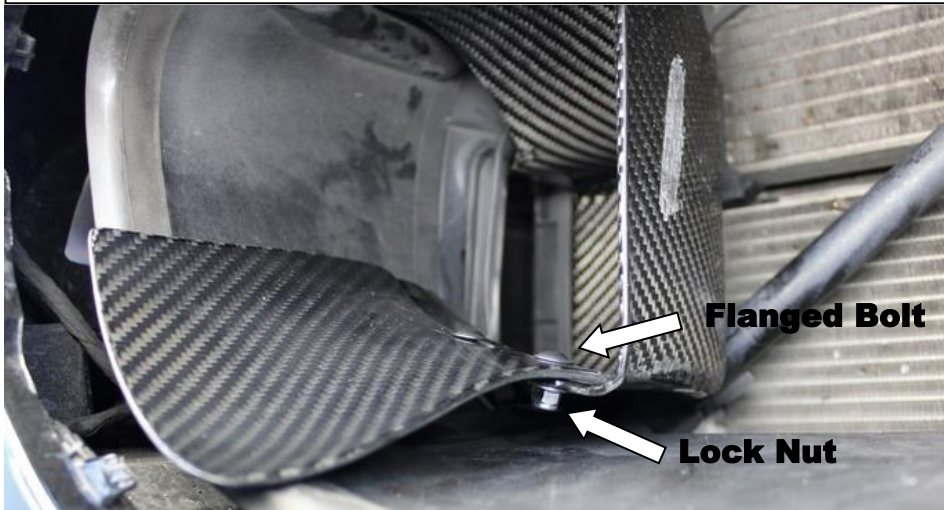
4. Push the scoop down as far as possible – down the strut brace. While you push it down, push the top of the scoop back at the same time so the top goes behind the bumper trim as shown.



5. Scoop should sit as shown here with the top behind the bumper trim and the outlet side lined up with the stock duct entry. Scoop outlet edge and stock duct edge are highlighted here with red lines.



6. Now line up the LHS scoop extension with the holes on the scoop and use 2 black flanged bolts with M5 lock nuts to secure.



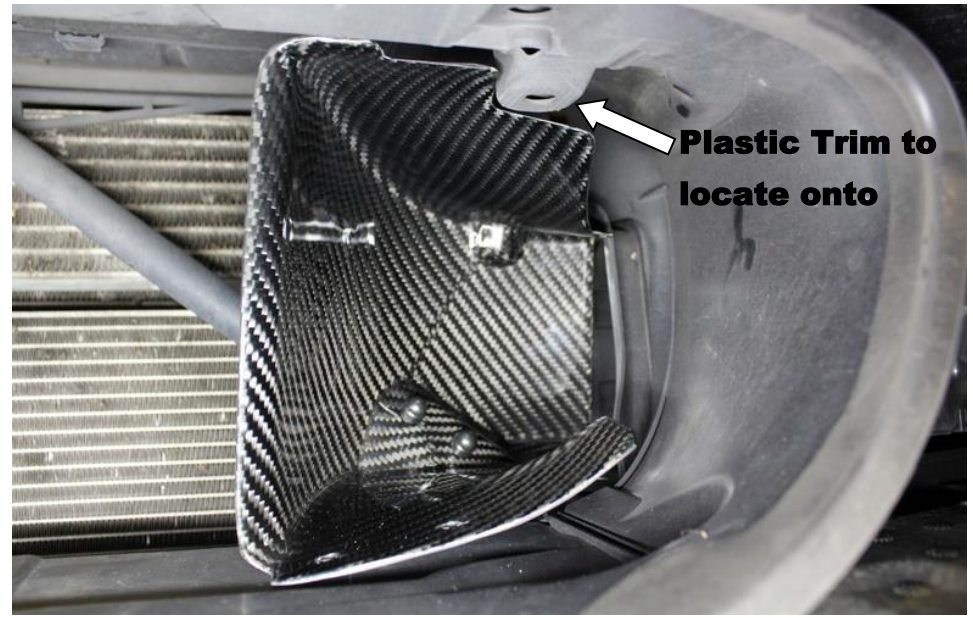
7. Completed LHS Scoop and Extension.



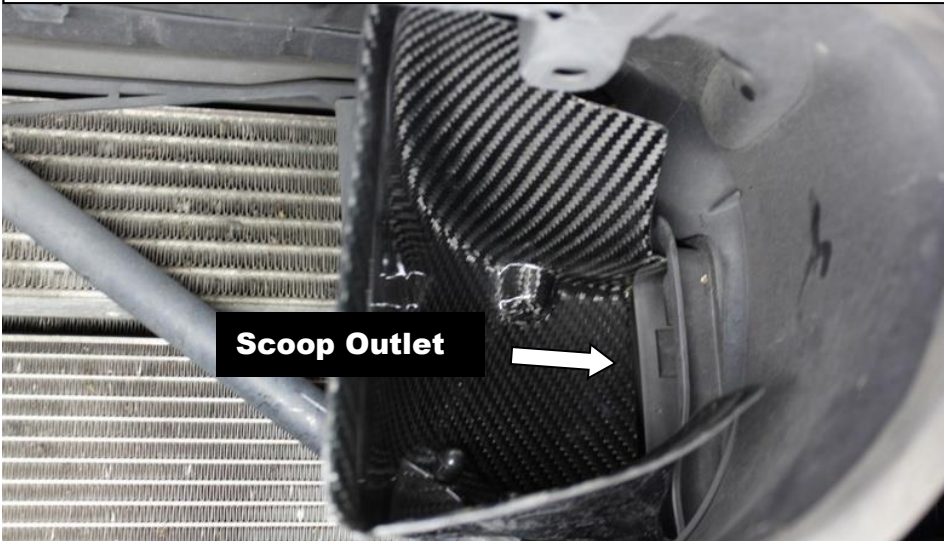
8. Now insert the RHS scoop into the middle of the right side opening.



9. Push the scoop all the way back and push the clamps at the back of the scoop onto the strut brace.



10. Push the scoop down the strut brace while pushing the top of the scoop back. It should locate onto the shown plastic trim.



11. Now push the top of the scoop back to clear the plastic trim and push down along the strut brace so that the scoop outlet meets the stock duct entry.



12. The scoop should sit as shown here. Notice the scoop outlet is lined up with the stock duct entry highlighted in red.



13. Take the RHS scoop extension and line up the holes again. Secure with 2 black flanged bolts and M5 lock nuts supplied.



**Scoop Extensions  
go under grills**

14. Now push the grills back into place. The scoop Extensions should sit UNDER the grills. Push them down while you push the grills into place.